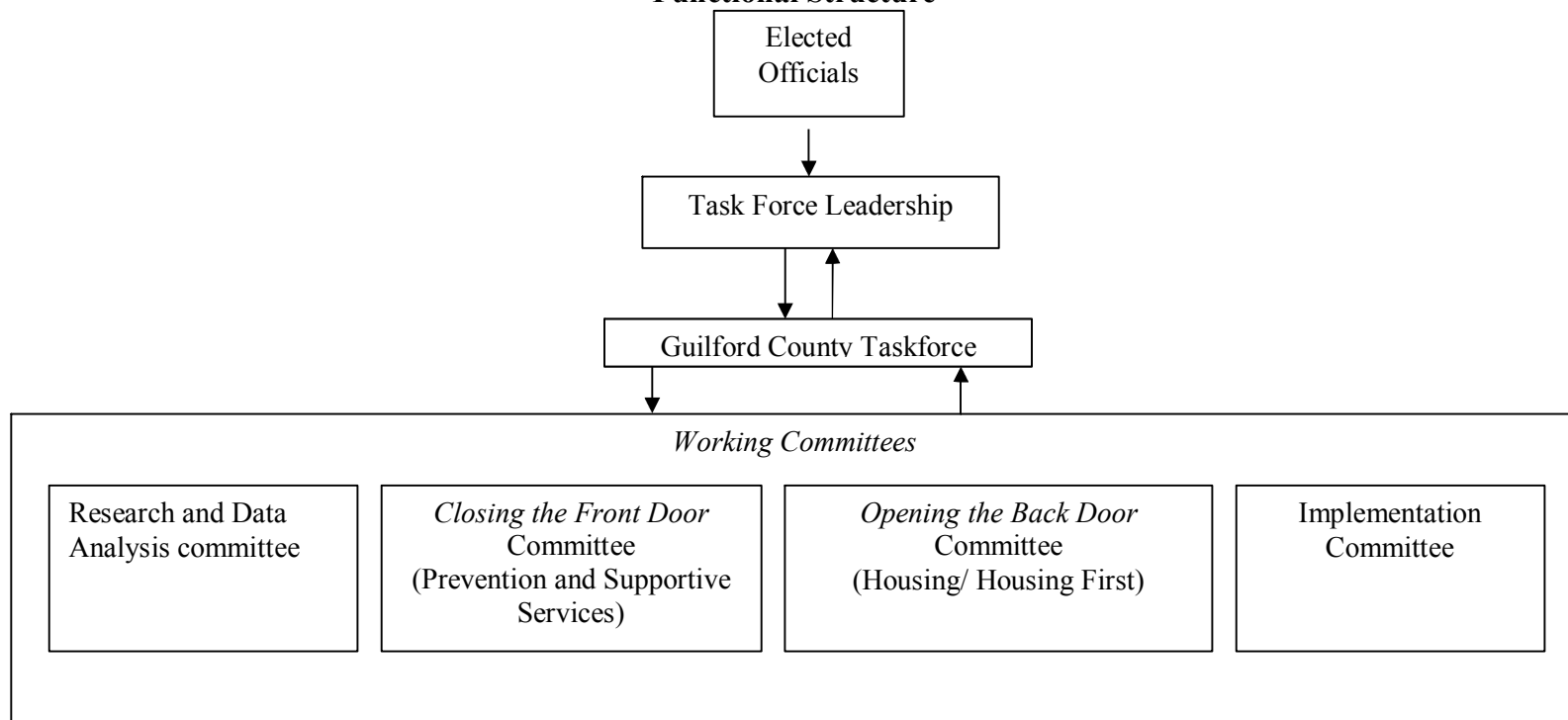


**Guilford/High Point/Greensboro Task Force on Ending Homelessness  
Functional Structure**



***Committee Functions:***

**Leadership/ Administrative:** Convene Task Force meetings, communicate with members and community, and oversee plan development

**Research and Data Analysis:** Analyze data and community input; develop a cost study and unit need assessment

**Closing the Front Door:** Research and analyze best practices in prevention and supportive services for applicability to Guilford County; provide recommendations to Task Force

**Opening the Back Door:** Research and analyze best practices for housing for applicability to Guilford County; provide recommendations to Task Force

**Implementation:** Develop business plan, structure for plan implementation, and plan for community engagement